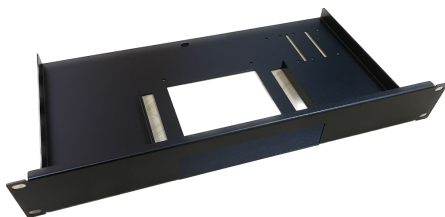




### How to Install

- 1) Remove the screw on the bottom of the Paloalto Appliance, place your Paloalto Appliance in your RI-PA400, and fix with the Phillips Screw on the bottom of the RI-PA400.
- 2) Place the power supply on the RI-PA400 and tie it down with the 2 Tie Wraps.
- 3) Connect the cables from the connectors to your Paloalto Appliance, and fix with the Tie Wrap on the bridge hole at the rear of the RI-PA400.

### Package Contents



RI-PA400 x1



Phillips Screw x2



Tie Wrap x3